



Data Warehouse Reports Catalog

Management (available with Month to Date and Year to Date)

- Practice Analysis
- Group Analysis
- Provider Analysis
- Location Analysis
- Procedure Statistics
- Provider Summary
- Provider Cross-Reference (for use with physician extenders)
- Payor by Location
- Payor Source by Statistic

Managed Care

- Capitation Summary
- Underpayment Report
- Unpaid Claims Report

Operations

- Collection Percentage
- Medicare Allowable Comparison
- Underpayment/Contractual Analysis
- Procedure Details
- Procedure Activity
- Receipts by Procedure
- Charges with Applied Pymts & Adjusts
- Charges and Collections audit
- YTD Refunds

Data Export/Integration

Reports and Ad-Hoc Data Queries can be exported for analysis or import into other applications in various standard formats

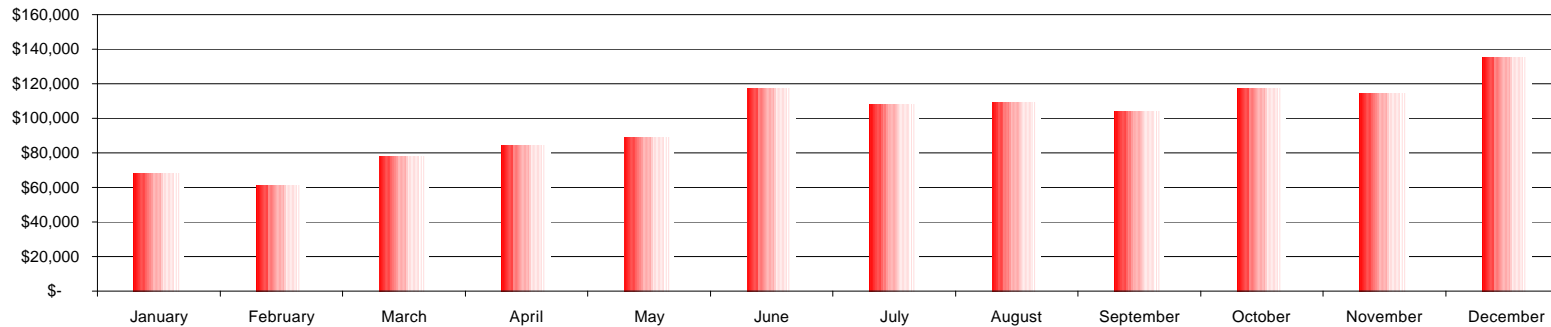


Charges

	January	February	March	April	May	June	July	August	September	October	November	December	YTD Total
PRIVATE/CASH	1,535	230	130	250	645	820	(17)	465	605	425	310	943	\$ 6,341
MEDICARE	12,105	18,436	20,723	31,765	35,880	46,745	44,443	33,050	37,170	42,748	43,605	53,757	\$ 420,427
MEDI-CAL	-	-	-	-	-	-	-	105	-	-	-	-	\$ 105
CMS	-	-	-	-	-	-	-	-	-	-	-	-	\$ -
PPO/COMM	52,680	41,270	53,170	49,385	51,308	68,085	61,660	71,045	63,800	72,730	68,253	78,298	\$ 731,684
WORK COMP	-	-	-	70	70	140	70	-	70	-	25	161	\$ 606
HMO	1,720	1,290	3,950	2,850	1,125	1,670	2,095	3,805	1,135	870	1,300	1,921	\$ 23,731
TRICARE	200	-	-	70	-	-	70	335	915	305	865	-	\$ 2,760
Monthly Total	\$ 68,240	\$ 61,226	\$ 77,973	\$ 84,390	\$ 89,028	\$ 117,460	\$ 108,321	\$ 108,805	\$ 103,695	\$ 117,078	\$ 114,358	\$ 135,079	\$ 1,185,653
PRIVATE/CASH	2.2%	0.4%	0.2%	0.3%	0.7%	0.7%	-0.0%	0.4%	0.6%	0.4%	0.3%	0.9%	0.5%
MEDICARE	17.7%	30.1%	26.6%	37.6%	40.3%	39.8%	41.0%	30.4%	34.2%	39.3%	40.1%	49.4%	35.5%
MEDI-CAL	-	-	-	-	-	-	-	0.1%	-	-	-	-	0.0%
CMS	-	-	-	-	-	-	-	-	-	-	-	-	0.0%
PPO/COMM	77.2%	67.4%	68.2%	58.5%	57.6%	58.0%	56.9%	65.3%	58.6%	66.8%	62.7%	72.0%	61.7%
WORK COMP	-	-	-	0.1%	0.1%	0.1%	0.1%	-	0.1%	-	0.0%	0.1%	0.1%
HMO	2.5%	2.1%	5.1%	3.4%	1.3%	1.4%	1.9%	3.5%	1.0%	0.8%	1.2%	1.8%	2.0%
TRICARE	0.3%	-	-	0.1%	-	-	0.1%	0.5%	1.5%	0.5%	1.4%	-	0.2%

100%

Charges



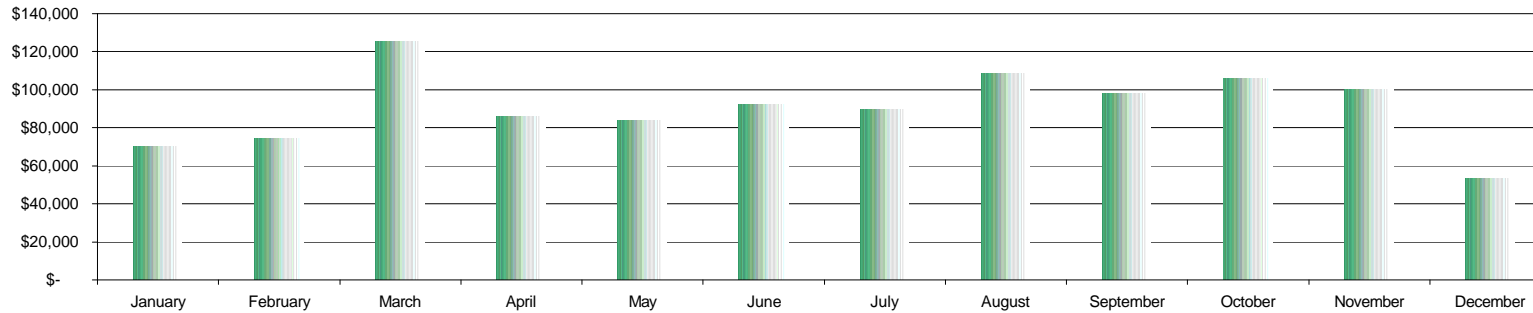


Payments

	January	February	March	April	May	June	July	August	September	October	November	December	YTD Total
PRIVATE/CASH	2,416	455	697	290	179	784	867	339	(1,774)	353	(1)	823	\$ 4,605
MEDICARE	7,584	4,893	8,865	9,235	12,166	20,882	21,224	22,076	13,887	27,512	24,343	21,926	\$ 172,667
MEDI-CAL	-	-	-	-	-	-	-	-	-	-	-	-	\$ -
CMS	-	-	-	-	-	-	-	-	-	-	-	-	\$ -
PPO/COMM	18,816	25,749	31,858	27,545	27,502	29,193	27,340	43,170	43,395	34,028	34,089	30,653	\$ 342,685
WORK COMP	-	-	-	-	-	-	-	-	-	-	48	-	\$ 48
HMO	315	201	668	364	745	188	335	215	172	984	340	197	\$ 4,527
TRICARE	-	-	10	16	67	11	-	-	37	445	11	12	\$ 597
Monthly Total	\$ 70,405	\$ 74,456	\$ 125,676	\$ 85,924	\$ 83,648	\$ 92,345	\$ 89,638	\$ 108,477	\$ 98,072	\$ 105,960	\$ 100,182	\$ 53,611	\$ 1,034,783
PRIVATE/CASH	3.4%	0.6%	0.6%	0.3%	0.2%	0.8%	1.0%	0.3%	-1.6%	0.3%	-0.0%	1.5%	0.4%
MEDICARE	10.8%	6.6%	7.1%	10.7%	14.5%	22.6%	23.7%	20.4%	12.8%	25.4%	22.4%	40.9%	16.7%
MEDI-CAL	-	-	-	-	-	-	-	-	-	-	-	-	-
CMS	-	-	-	-	-	-	-	-	-	-	-	-	-
PPO/COMM	26.7%	34.6%	25.3%	32.1%	32.9%	31.6%	30.5%	39.8%	40.0%	31.4%	31.4%	57.2%	33.1%
WORK COMP	-	-	-	-	-	-	-	-	-	-	0.0%	-	0.0%
HMO	0.4%	0.3%	0.5%	0.4%	0.9%	0.2%	0.4%	0.2%	0.2%	0.9%	0.3%	0.4%	0.4%
CHAMPUS	-	-	0.0%	0.0%	0.1%	0.0%	-	-	0.0%	0.4%	0.0%	0.0%	0.1%

100%

Payments



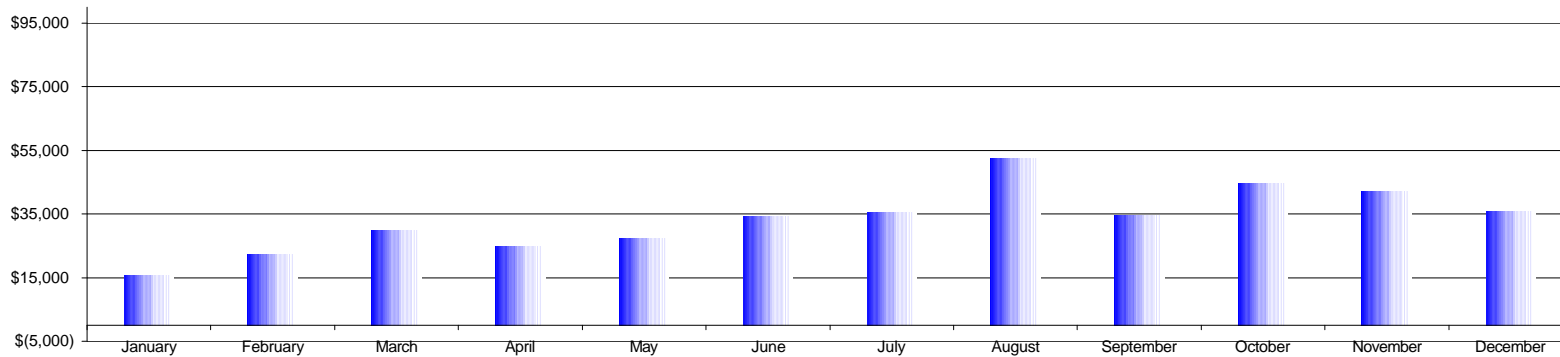


Adjustments

	January	February	March	April	May	June	July	August	September	October	November	December	YTD Total
PRIVATE/CASH	8	92	15	181	-	(4)	7	65	(4)	97	5	(4)	\$ 462
MEDICARE	6,179	4,864	7,311	8,012	7,912	15,546	16,360	17,353	9,651	22,753	21,973	16,323	\$ 137,914
MEDI-CAL	-	-	-	-	-	-	-	-	-	-	-	-	\$ -
CMS	-	-	-	-	-	-	-	-	-	-	-	-	\$ -
PPO/COMM	8,323	16,323	19,810	14,139	18,749	17,332	17,929	32,973	24,146	19,294	19,118	18,199	\$ 208,136
WORK COMP	-	-	-	-	-	-	-	-	-	210	22	-	\$ 232
HMO	1,210	1,134	2,607	2,320	460	1,272	1,405	1,845	863	1,955	895	1,336	\$ 15,966
TRICARE	-	-	7	41	24	-	-	3	41	338	-	-	\$ 454
Monthly Total	\$ 15,720	\$ 22,413	\$ 29,750	\$ 24,693	\$ 27,145	\$ 34,146	\$ 35,701	\$ 52,239	\$ 34,697	\$ 44,647	\$ 42,013	\$ 35,853	\$ 363,164
PRIVATE/CASH	0.1%	0.4%	0.1%	0.7%	-	-0.0%	0.0%	0.1%	-0.0%	0.2%	0.0%	-0.0%	0.1%
MEDICARE	39.3%	21.7%	24.6%	32.4%	29.1%	45.5%	45.8%	33.2%	18.5%	43.6%	42.1%	31.2%	38.0%
MEDI-CAL	-	-	-	-	-	-	-	-	-	-	-	-	-
CMS	-	-	-	-	-	-	-	-	-	-	-	-	-
PPO/COMM	52.9%	72.8%	66.6%	57.3%	69.1%	50.8%	50.2%	63.1%	46.2%	36.9%	36.6%	34.8%	57.3%
WORK COMP	-	-	-	-	-	-	-	-	-	0.4%	0.0%	-	0.1%
HMO	7.7%	5.1%	8.8%	9.4%	1.7%	3.7%	3.9%	3.5%	1.7%	3.7%	1.7%	2.6%	4.4%
TRICARE	-	-	0.0%	0.2%	0.1%	-	-	0.0%	0.1%	0.6%	-	-	0.1%

100%

Adjustments



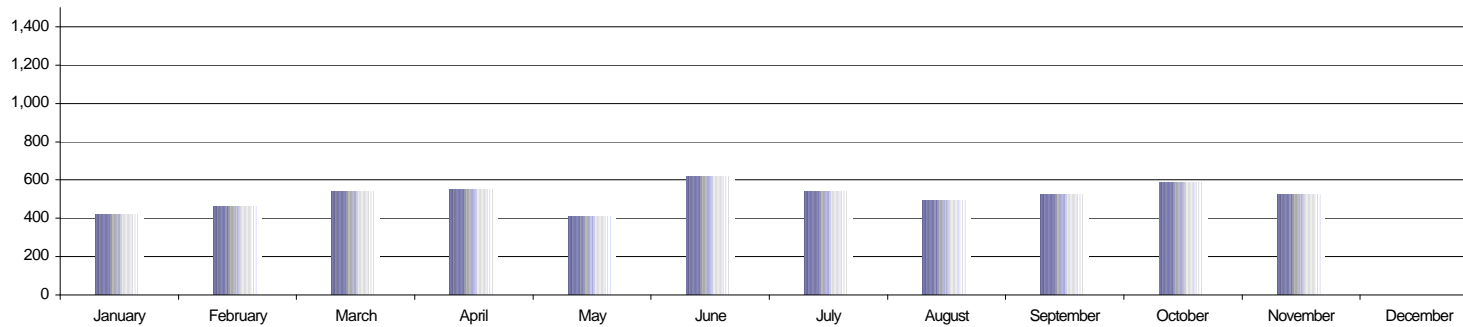


Encounters

	January	February	March	April	May	June	July	August	September	October	November	December	YTD Total
PRIVATE/CASH	16	4	2	3	8	8	5	5	7	5	4	-	67
MEDICARE	113	175	191	199	139	226	220	178	201	244	237	-	2,123
MEDI-CAL	-	-	-	-	-	-	-	1	-	-	-	-	1
CMS	-	-	-	-	-	-	-	-	-	-	-	-	0
PPO/COMM	261	270	313	319	251	365	293	294	301	328	265	-	3,260
WORK COMP	-	-	-	1	1	2	1	-	1	-	1	-	7
HMO	23	12	32	27	12	18	20	13	12	9	14	-	192
TRICARE	3	-	-	1	-	-	1	1	3	2	2	-	13
Monthly Total	416	461	538	550	411	619	540	492	525	588	523	0	5,663
PRIVATE/CASH	3.8%	0.9%	0.4%	0.5%	1.9%	1.3%	0.9%	1.0%	1.4%	1.0%	0.8%	-	1.2%
MEDICARE	27.2%	38.0%	35.5%	36.2%	33.8%	36.5%	40.7%	36.2%	40.9%	49.6%	48.2%	-	37.5%
MEDI-CAL	-	-	-	-	-	-	-	0.2%	-	-	-	-	0.0%
CMS	-	-	-	-	-	-	-	-	-	-	-	-	-
PPO/COMM	62.7%	58.6%	58.2%	58.0%	61.1%	59.0%	54.3%	59.8%	61.2%	66.7%	53.9%	-	57.6%
WORK COMP	-	-	-	0.2%	0.2%	0.3%	0.2%	-	0.2%	-	0.2%	-	0.1%
HMO	5.5%	2.6%	5.9%	4.9%	2.9%	2.9%	3.7%	2.6%	2.4%	1.8%	2.8%	-	3.4%
TRICARE	0.7%	-	-	0.2%	-	-	0.2%	0.2%	0.6%	0.4%	0.4%	-	0.2%

100%

Encounters





Procedure Statistics Analysis

Procedure Description	January	February	March	April	May	June	July	August	September	October	November	December	YTD TOTAL
	INCISION AND REMOVAL OF FOREIGN BO	Units 8	6	5	7	3	9	8	11				
	Fee 880	660	550	770	330	990	880	1,210					6,270
BIOPSY OF SKIN/TISSUE	Units -	-	-	-	-	-	-	1	-	-	-	-	1
	Fee -	-	-	-	-	-	-	100	-	-	-	-	100
SKIN TAG REMOVAL 1-15	Units 2	-	1	-	-	1	1	1	-	-	-	-	6
	Fee 190	-	95	-	-	95	35	95	-	-	-	-	510
EXCISION,BENIGN LESION;TRUNK,ARMS	Units -	-	3	-	-	2	2	1	-	-	-	-	8
	Fee -	-	255	-	-	150	170	85	-	-	-	-	660
EXCISION BENIGN LESION/ARMS,LEGS,TF	Units 3	4	1	2	2	2	2	4	-	-	-	-	20
	Fee 350	420	100	185	185	165	200	355	-	-	-	-	1,960
BIOPSY SKIN	Units -	1	-	-	-	-	-	-	-	-	-	-	1
	Fee -	100	-	-	-	-	-	-	-	-	-	-	100
DESTROY BENIGN/PREMAI LESION	Units 8	14	13	7	5	6	8	8	-	-	-	-	69
	Fee 640	1,120	1,040	400	400	480	640	640	-	-	-	-	5,360
DESTRUCT LESION SECOND - 14	Units 7	12	10	3	1	2	1	1	-	-	-	-	37
	Fee 315	540	450	45	90	90	45	45	-	-	-	-	1,620
DESTRUCTION LESION 15 OR MORE	Units 2	6	2	9	4	3	3	1	-	-	-	-	30
	Fee 600	1,800	600	2,100	1,200	900	900	300	-	-	-	-	8,400
ARTHROCENTESIS MED JOINT	Units -	-	1	1	1	-	-	-	-	-	-	-	3
	Fee -	-	80	80	80	-	-	-	-	-	-	-	240
VENIPUNCTURE	Units 62	39	50	54	40	62	40	53	-	-	-	-	400
	Fee 620	390	500	500	400	620	400	530	-	-	-	-	3,960
SIGMOIDOSCOPY,FEXIBLE;DIAGNOSTIC	Units 13	14	8	11	12	5	5	12	-	-	-	-	80
	Fee 3,250	3,500	2,000	2,750	3,000	1,250	1,250	3,000	-	-	-	-	20,000
IMPACT CERUMEN REMOVAL	Units 1	2	1	-	-	2	1	1	-	-	-	-	8
	Fee 50	100	100	-	-	100	50	50	-	-	-	-	450
THYROID ULTRASOUND	Units -	-	1	-	1	-	-	-	-	-	-	-	2
	Fee -	-	200	-	200	-	-	-	-	-	-	-	400
ECHO,ABDOMINAL,B-SCAN	Units 5	1	-	2	3	2	2	1	-	-	-	-	16
	Fee 1,250	250	-	500	750	500	500	250	-	-	-	-	4,000
ECHO,RETROPERITONEAL COMPLETE	Units 1	1	1	1	-	1	3	-	-	-	-	-	8
	Fee 200	200	200	200	-	200	600	-	-	-	-	-	1,600
PELVIC ULTRASOUND	Units 1	-	-	-	1	1	2	-	-	-	-	-	5
	Fee 250	-	-	-	250	250	500	-	-	-	-	-	1,250
SCROTAL ULTRASOUND	Units -	1	-	-	-	-	-	-	-	-	-	-	1
	Fee -	250	-	-	-	-	-	-	-	-	-	-	250
ECHOGRAPHY,EXTREMITY N/VASCULAR	Units -	-	1	-	-	-	-	-	-	-	-	-	1
	Fee -	-	150	-	-	-	-	-	-	-	-	-	150
ULTRASOUND BONE DENSITY	Units -	-	-	-	-	-	-	6	-	-	-	-	6
	Fee -	-	-	-	-	-	-	450	-	-	-	-	450
BONE DENSITY IMAGING STUDY	Units -	-	-	-	-	-	7	2	-	-	-	-	9
	Fee -	-	-	-	-	-	525	150	-	-	-	-	675
UB RESIDUAL STUDY	Units 1	1	1	1	-	-	2	-	-	-	-	-	6
	Fee 185	185	185	185	-	-	370	-	-	-	-	-	1,110



Practice Aging Summary By Financial Class

<i>Financial Class</i>	<i>0 - 30</i>	<i>31 - 60</i>	<i>61 - 90</i>	<i>91 - 120</i>	<i>121 - 150</i>	<i>151 +</i>	<i>Total AR</i>
PRIVATE/CASH	\$2,030.79	\$7,980.55	\$5,729.20	\$3,570.28	\$1,393.29	\$3,984.17	\$24,688.28
PT CREDIT	\$0.00	\$0.00	\$0.00	\$0.00	\$0.00	\$0.00	\$0.00
MEDICARE	\$64,392.06	\$27,586.86	\$6,271.65	\$5,197.24	\$1,733.91	\$962.80	\$106,144.51
MEDI-CAL	\$879.60	\$1,904.40	\$148.67	\$346.74	\$116.58	\$0.00	\$3,395.99
PPO/COMM	\$128,784.11	\$61,304.13	\$15,679.12	\$11,384.98	\$8,669.57	\$6,418.64	\$232,240.55
AETNA	\$52,356.40	\$19,153.56	\$2,994.89	\$1,757.27	\$146.99	\$313.12	\$76,722.23
CIGNA	\$28,306.07	\$2,563.21	\$2,568.70	\$1,688.99	\$7,253.67	\$4,491.76	\$46,872.40
HEALTHNET	\$18,121.03	\$12,064.95	\$5,087.37	\$984.43	\$1,570.74	\$862.40	\$38,690.92
UNITED HEALTH	\$71,893.68	\$5,909.99	\$2,607.10	\$389.61	\$678.32	\$500.92	\$81,979.62
WORK COMP	\$0.00	\$121.00	\$0.00	\$0.00	\$0.00	\$0.00	\$121.00
BLUE CROSS	\$127,976.81	\$25,503.15	\$15,684.85	\$5,667.28	\$1,351.63	\$1,966.90	\$178,150.62
TRICARE	\$733.00	\$1,587.00	\$123.89	\$288.95	\$0.00	\$0.00	\$2,732.84
BLUE SHIELD	\$88,321.81	\$23,075.19	\$11,563.99	\$6,128.76	\$1,609.35	\$2,717.35	\$133,416.45
TOTALS	\$583,795.36	\$188,753.99	\$68,459.43	\$37,404.53	\$24,524.05	\$22,218.06	\$925,155.41
Percent of Total	63%	20%	7%	4%	3%	2%	100%



Underpayment Detail

- Allowable calculated at 115% of Medicare fee schedule

3008	Blue Cross PPO	Fee	Allowable	Difference	Payments	Adjust
Provider 1 Smith, John						
31500 - INTUBATION ENDOTRACHAL ER		\$177.60	\$100.89	\$76.71	\$0.00	\$177.60
31622 - BRONCHOSCOPY;DIAGNOSTIC		\$1,265.40	\$383.63	\$881.77	\$348.12	\$917.28
31628 - ENDOSCOPY W/TRANSBRONCHIAL LUNG		\$815.85	\$231.50	\$584.35	\$280.57	\$535.28
32000 - THORACENTESIS PLEURAL CAV		\$166.50	\$127.24	\$39.26	\$97.75	\$68.75
36489 - PLACE CENTRAL VENOUS CATH		\$194.25	\$127.78	\$66.47	\$68.48	\$125.77
71020 - CHEST X-RAY --2		\$865.80	\$362.88	\$502.92	\$471.78	\$377.76
92950 - CARDIOPULMONARY RESUSCIT		\$277.50	\$174.23	\$103.27	\$234.98	\$42.52
93000 - ECG 12 LEADS		\$66.60	\$23.71	\$42.89	\$26.26	\$40.34
94010 - SPIROMETRY		\$671.55	\$334.31	\$337.24	\$277.29	\$333.21
94060 - BRONCHOSPASM EVAL		\$233.10	\$149.04	\$84.06	\$129.85	\$103.25
94761 - EXERCISE OXIMETRY		\$271.95	\$74.54	\$197.41	\$29.19	\$242.76
99204 - NEW PT OFC VISIT/MOD COMP		\$310.80	\$214.85	\$95.95	\$289.35	\$21.45
99213 - OFFICE VISIT/EXPANDED		\$549.45	\$369.29	\$180.16	\$492.42	\$110.48
99214 - OFFICE VISIT/MOD COMPLEX		\$3,818.40	\$2,754.06	\$1,064.34	\$3,109.15	\$628.22
99222 - HOSP ADMISSION COMPLEX		\$122.10	\$94.76	\$27.34	\$71.75	\$50.35
99223 - HOSP VISIT HIGH COMPLEX		\$388.50	\$259.33	\$129.17	\$272.78	\$115.72
99231 - HOSP SUBSEQ CARE LOW COMP		\$2,935.95	\$1,337.31	\$1,598.64	\$1,667.23	\$1,204.02
99232 - HOSP SUBSEQ CARE MODERATE		\$5,128.20	\$3,060.29	\$2,067.91	\$3,544.72	\$1,583.48
99233 - HOSP SUBSEQ CARE HIGH COM		\$4,195.80	\$2,768.26	\$1,433.54	\$2,840.15	\$1,355.65
99238 - HOSPITAL DISCHARGE DAY		\$199.80	\$117.20	\$88.60	\$74.77	\$125.03
99244 - CONSULTATION/MOD. COMPLEX		\$2,497.50	\$1,317.34	\$1,142.46	\$1,582.87	\$664.88
99254 - HOSP CONSULT COMPREHENSIV		\$2,564.10	\$1,247.00	\$1,247.00	\$1,484.18	\$984.89
99255 - HOSP CONSULT HIGH COMPLEX		\$333.00	\$169.17	\$169.17	\$219.48	\$113.52

Summary for Provider 1 - Smith, John

\$28,049.00 \$5,889.06 \$12,160.64 \$17,613.12 \$9,922.20

Using any percentage of Medicare Allowable as a variable, compare actual reimbursement, by payor at the CPT code level. Calculations can be based on:

- Payor Specific Contractual Allowables
- RBRVS
- RVU



Charges with Associated Payments

<i>Financial Class</i>	<i>Charges</i>	<i>Payments</i>	<i>Collections Percentage</i>	<i>Adjust</i>	<i>Balance</i>
PRIVATE/CASH	\$339,839.31	\$163,122.87	48%	\$169,919.66	\$6,796.79
MEDICARE	\$772,395.80	\$386,197.90	50%	\$332,130.19	\$54,067.71
MEDI-CAL	\$28,282.75	\$9,616.14	34%	\$9,757.35	\$8,909.27
CMS	\$179,755.80	\$57,521.86	32%	\$106,055.92	\$16,178.02
PPO	\$774,189.60	\$441,288.07	57%	\$317,417.74	\$15,483.79
WORKCOMP	\$14,521.02	\$9,583.87	66%	\$4,906.90	\$30.25
COMMERCIAL	\$86,451.35	\$6,683.73	54%	\$19,430.42	\$20,337.20
IPA/HMO	\$273,499.54	\$13,074.79	45%	\$144,954.76	\$5,469.99
FHN	\$60,673.39	\$8,051.07	46%	\$29,072.85	\$3,549.47
TRICARE	\$36,114.96	\$0,781.95	29%	\$21,307.83	\$4,025.18
Grand Total	\$2,565,723.52	\$5,922.25		\$1,154,953.61	\$134,847.66

By analyzing actual payments by specific payor or financial class you can quickly identify contractual shortfalls or reimbursement problems.

This assists with contract enforcement and negotiations.



Data Warehouse Custom Query

ACCT #	CPT	FEE	PYMT	ADJ	BALANCE	INS NAME
258	93015	\$300.00	\$115.54	\$155.58	\$28.88	PRUDENT BUYER
15689	93015	\$300.00	\$243.00	\$57.00	\$0.00	HARRY J WILSON INS
133	93015	\$300.00	\$34.06	\$161.00	\$104.94	BLUE SHIELD
31314	93015	\$300.00	\$132.50	\$134.37	\$33.13	HEALTHPLAN SERVICES
32813	93015	\$300.00	\$173.50	\$84.00	\$42.50	CONNECTICUT GENERAL
42671	93015	\$300.00	\$198.90	\$51.38	\$49.72	LABORERS HEALTH TRUST
37455	93015	\$300.00	\$207.00	\$93.00	\$0.00	AETNA US HEALTHCARE
298	93015	\$300.00	\$211.20	\$88.80	\$0.00	AIR COND & REFRIG H&W
36328	93015	\$300.00	\$111.20	\$161.00	\$27.80	BLUE CROSS
6330	93015	\$300.00	\$178.49	\$101.68	\$19.83	MUTUAL OF OMAHA
314	93015	\$300.00	\$155.71	\$144.29	\$0.00	BLUE CARD
93015 Total		\$3,300.00	\$1,761.10	\$1,232.10	\$306.80	
6330	93325	\$200.00	\$161.60	\$38.40	\$0.00	MUTUAL OF OMAHA
167	93325	\$200.00	\$124.00	\$76.00	\$0.00	GREAT WEST LIFE
283	93325	\$200.00	\$140.00	\$60.00	\$0.00	UNITED HEALTHCARE
350	93325	\$200.00	\$133.31	\$66.69	\$0.00	BLUE CROSS
33306	93325	\$200.00	\$152.00	\$40.00	\$8.00	NTL ASSOC OF MASONS
34881	93325	\$200.00	\$124.00	\$76.00	\$0.00	GREAT WEST LIFE
314	93325	\$200.00	\$125.98	\$74.02	\$0.00	BLUE CROSS
30156	93325	\$200.00	\$130.71	\$69.29	\$0.00	CIGNA PPO
93325 Total		\$1,600.00	\$1,091.60	\$500.40	\$8.00	
6330	93350	\$650.00	\$371.93	\$278.07	\$0.00	MUTUAL OF OMAHA
167	93350	\$650.00	\$184.00	\$466.00	\$0.00	GREAT WEST LIFE
350	93350	\$650.00	\$96.63	\$406.62	\$146.75	BLUE CROSS
314	93350	\$650.00	\$243.38	\$406.62	\$0.00	BLUE CROSS
30156	93350	\$650.00	\$143.87	\$506.13	\$0.00	CIGNA PPO
28647	93350	\$650.00	\$312.00	\$250.00	\$88.00	BPS/ANTHEM
93350 Total		\$3,950.00	\$1,351.81	\$2,313.44	\$234.75	

CHMB's Data Warehouse stores all client data in a relational database with the ability to work with the data in different ways:

- o Customized analysis and reporting
- o MS Excel®, Word®, Access® output format options
- o Interfacing with other software applications